



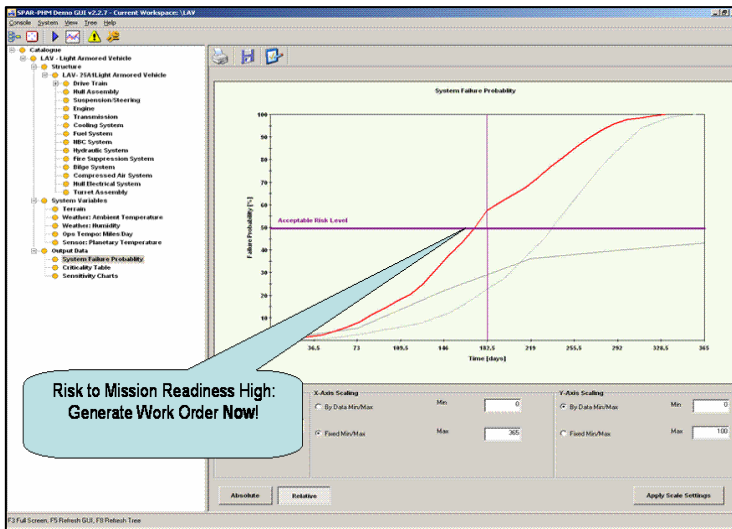
CLOCKWORK SOLUTIONS



# PRODUCT APPLICATION

## Fact Sheet Total Life Cycle Readiness Prediction

### Residual Life Estimation (Parts)



### Total Life Cycle Fleet Performance Prediction



<b>Customer:</b>	HQ USMC Installation and Logistics (I&L) POC: LtCol Ray Johnson, <a href="mailto:JohnsonCR@hqmc.usmc.mil">JohnsonCR@hqmc.usmc.mil</a>
<b>Requirement:</b>	Total Life Cycle Fleet Performance Prediction and Analysis Capability. Provides Comprehensive Supportability Assessment, Risk to Performance Identification and Performance Improvement Strategy Development tools utilizing USMC Logistics Data Repository and Sense and Respond Inputs.
<b>Predicted Performance Metrics:</b>	<ol style="list-style-type: none"> <li>Operational Availability (Ao) impacts as a result of equipment aging and supportability improvements.</li> <li>Spares requirements in order to meet a specific Ao over a specified time period.</li> <li>Future system degraders (sensitivity assessments).</li> <li>Cost of operation over time (\$/unit usage).</li> <li>Expected/Remaining Life (via accumulated hours, repair events, mean time to removal, and many other metrics).</li> </ol>
<b>COTS Technologies Applied:</b>	ATLAST™, Clockwork Solutions SPAR-PHM, Clockwork Solutions
<b>Integration Team:</b>	USMC I&L, PM LAV Sense and Respond Program Team, Clockwork Solutions
<b>CS Project Manager:</b>	Mr. Pat Connally (512)338-1945, <a href="mailto:pat.connally@clockwork-solutions.com">pat.connally@clockwork-solutions.com</a>

**Contact:** Email: [info@clockwork-solutions.com](mailto:info@clockwork-solutions.com)

Website: [www.clockwork-solutions.com](http://www.clockwork-solutions.com)