

PRODUCT DESCRIPTION

VisualSPAR™ version 2.2

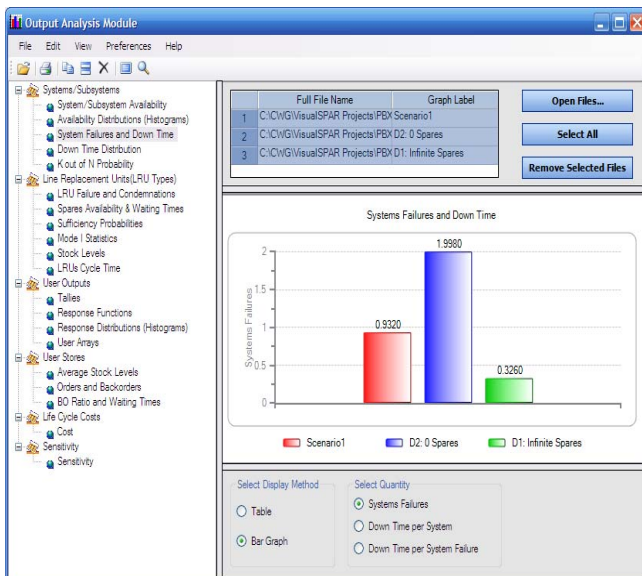
The recently released **VisualSPAR™ version 2.2** (v2.2) is a state-of-the-art predictive modeling and simulation development platform designed to provide comprehensive life cycle equipment availability analysis capabilities.

VisualSPAR's two major advancements include the use of advanced technologies as the foundation for its development platform and the enablement of interfaces to external data sources which can later be embedded and integrated into the user's environment. **VisualSPAR v2.2** greatly enhances these capabilities.



Clockwork Solutions continuously seeks feedback from the growing community of **VisualSPAR** users. Many client requirements and suggested enhancements were incorporated into **VisualSPAR v2.2**.

VisualSPAR v2.2 provides improved tools that allow third party applications to access **VisualSPAR** project data and take control over the simulation process. These tools enhance the "embedded" capabilities of **VisualSPAR**. The release is delivered with a Sample C# Solution, demonstrating a method of working with these auxiliary tools.

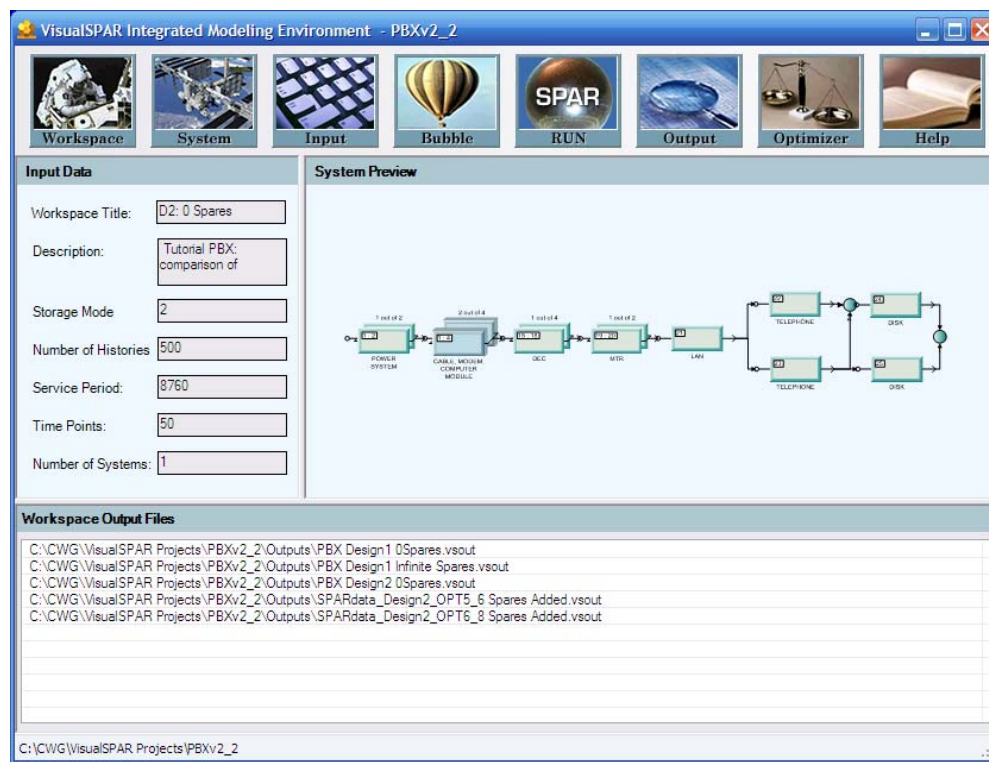


New functionality and major enhancements include:

- Output Analysis Module (OAM) with improved ergonomics and usability.
- User Arrays (defined for Output purpose) are presented in OAM.
- Response-Functions and Availability of System/Subsystems can now be presented together on the same time dependent OAM graph.

(continue...)

- Advanced Debugger – presentation of detailed model information during a debug session. The model data presented within the advanced debugger is automatically updated (refreshed) upon stepping to the code line which affects the model state. The presented model information includes the internal state of each LRU in the field, the age of LRU's, the state of systems, and more.
- Ability to import Bubble Logic from one project workspace to another.
- Restore workspace input data from an existing project output file.
- Sufficiency data gathering can be defined by the user and is no longer limited to the first 300 histories.
- Workspace Preview Panels help the user to quickly identify the opened workspace and open the required model results.



More details about the new release and its functionality can be found in the **VisualSPAR v2.2 Release Notes** and **VisualSPAR** revised *User Manual*.

Contact:

Email: info@clockwork-solutions.com
 Website: www.clockwork-solutions.com